

General Notes:

☐ 2-5yrs

☒ 5-12 yrs

☐ 2-12yrs

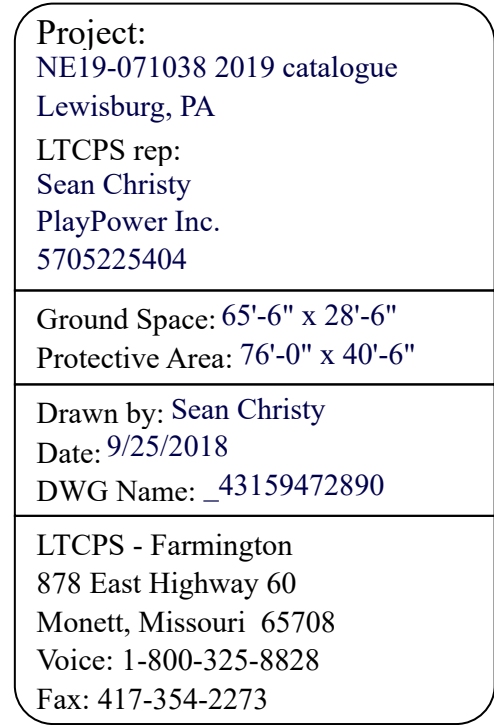
☐ 13+ yrs

1. The Americans with Disabilities Act (ADA) may require that you make your park and/or playground accessible when viewed in its entirety. Please consult your legal counsel to determine if the ADA applies to you.
2. For playground equipment to be considered accessible, accessible surfacing must be utilized in applicable areas.
3. Although a particular playground design may not meet the proposed Access Board Regulations in regards to the appropriate number of ground level events, the actual playground may be in compliance when considering existing play components.
4. All deck heights are measured from top of ground cover.
5. Fall absorbing ground cover is required under and around all play equipment.
6. The minimum recommended fall zone around the entire playstructure is shown. This zone is to be free of all tripping or collision hazards (i.e. roots, rocks, border material, etc.).
7. All post lengths are identified by text showing the post lengths, i.e. 96 represents a 96 inch post.
8. Not all equipment may be appropriate for all children. Supervision is required.

ACTIVITY PANEL



little tikes **COMMERCIAL**
Playgrounds **Fun & Easy!**



☒ ASTM F1487 - Playground Equipment for Public Use.

☒ CPSC Handbook for Public Playground Safety



INTERNATIONAL PLAY EQUIPMENT
PUBLIC PLAY EQUIPMENT
IPEMA
CERTIFIED
TO
ASTM
F1487
MANUFACTURERS ASSOCIATION

To verify product certification,
visit www.ipema.org

LEED points for
this structure

1

